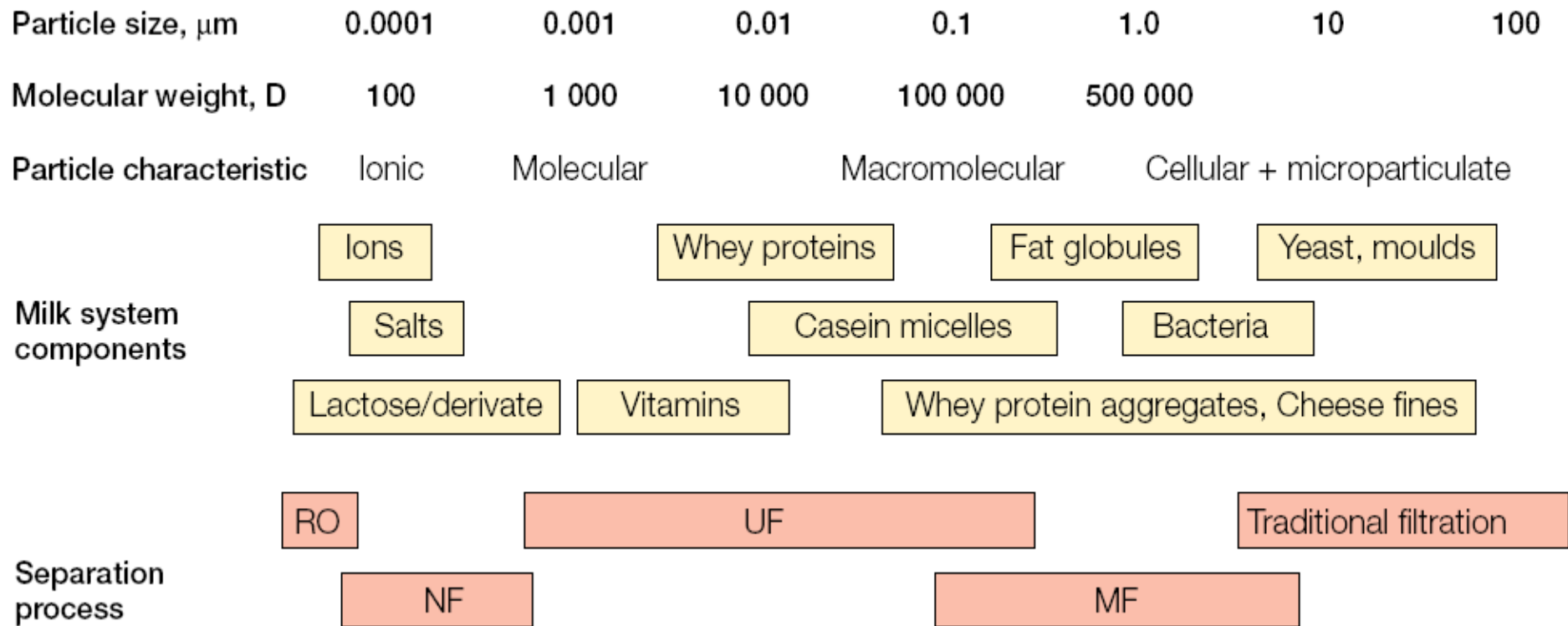
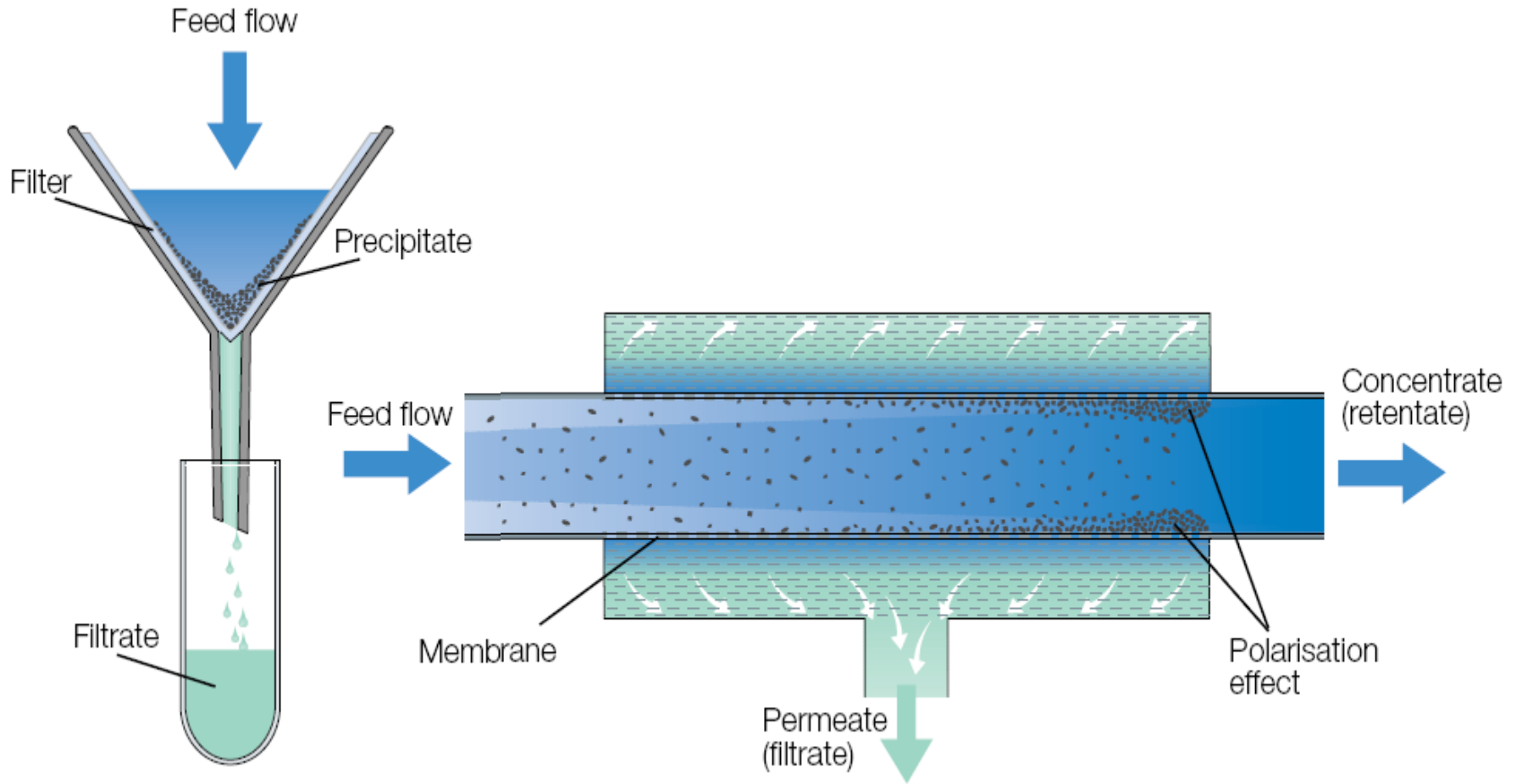


صنایع لبنی 1

دکتر علی نصیرپور



Spectrum of application of membrane separation processes in the dairy industry



Basic differences of conventional (left) and membrane filtration

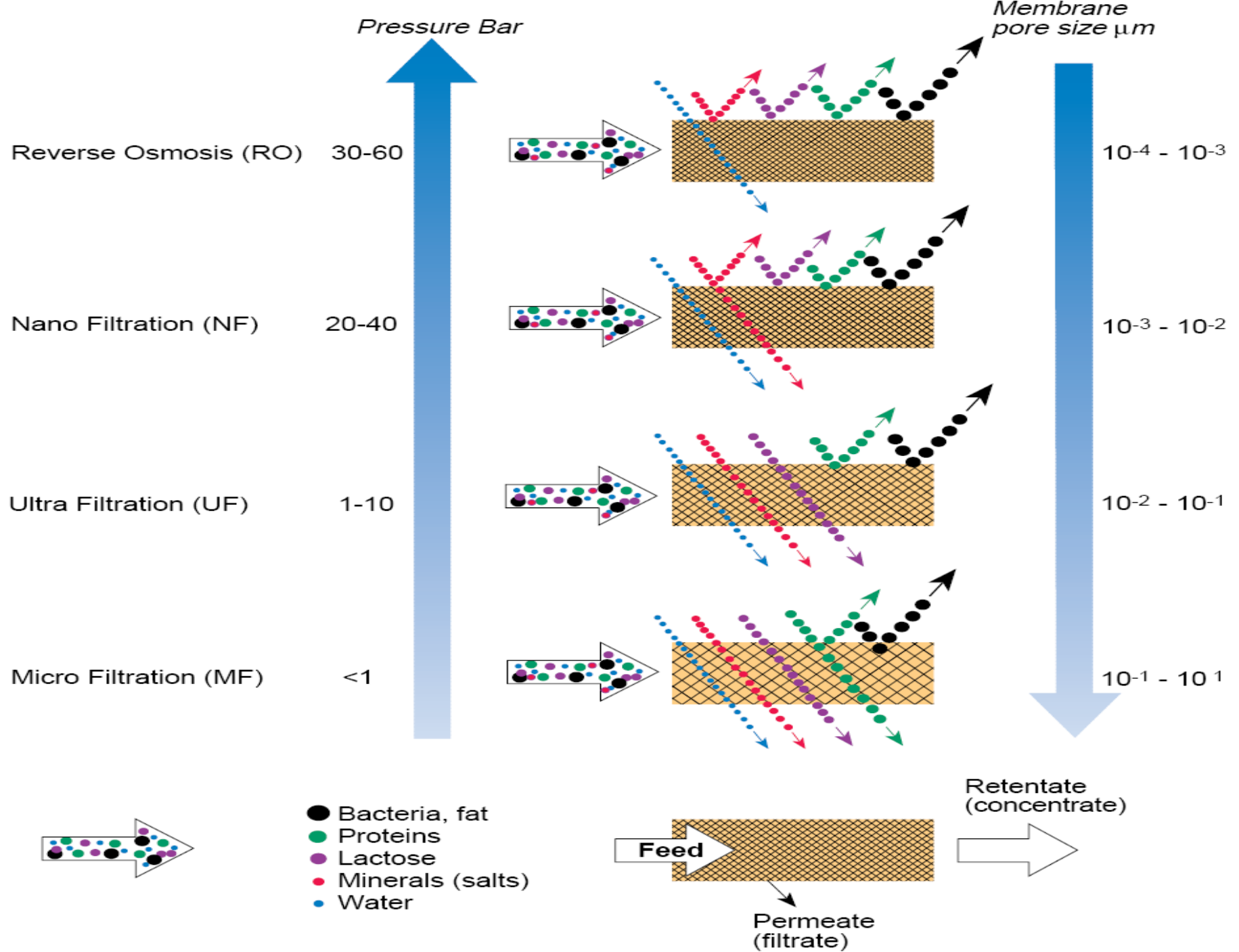


Fig 6.4.3 Principles of membrane filtration.

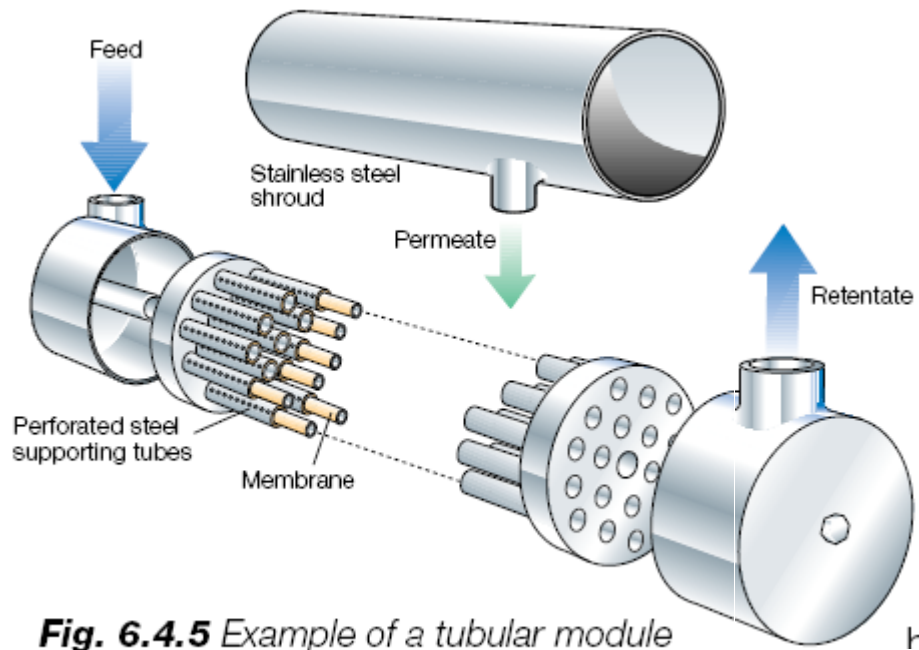
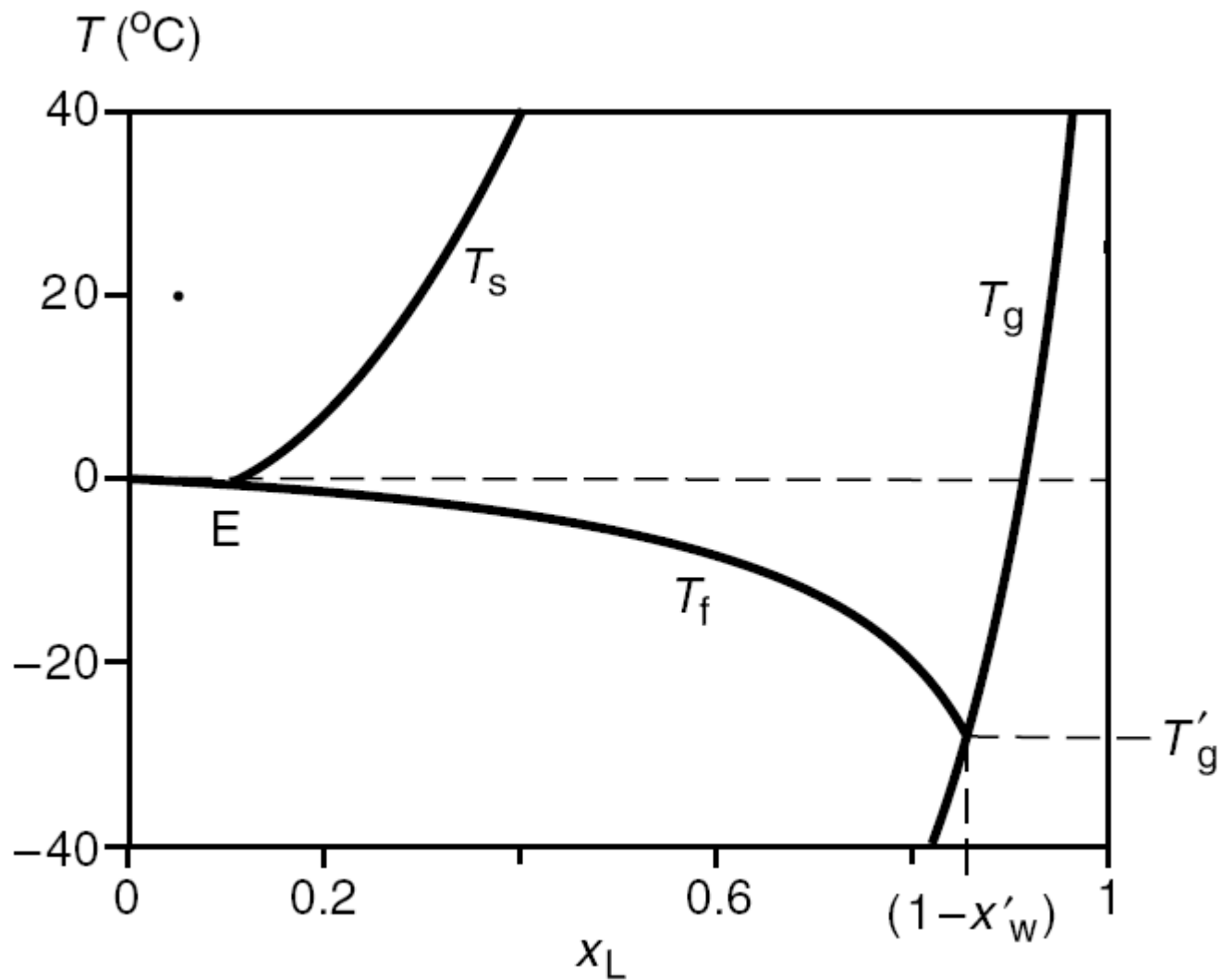


Fig. 6.4.5 Example of a tubular module to be integrated into a UF (or RO) system (PCI).



Partial state diagram of aqueous lactose solutions. T is temperature and x_L is mass fraction of lactose. T_s gives the solubility of lactose (for equilibrium between α - and β -lactose), T_f is freezing temperature, T_g is glass transition temperature, and E denotes the eutectic point.